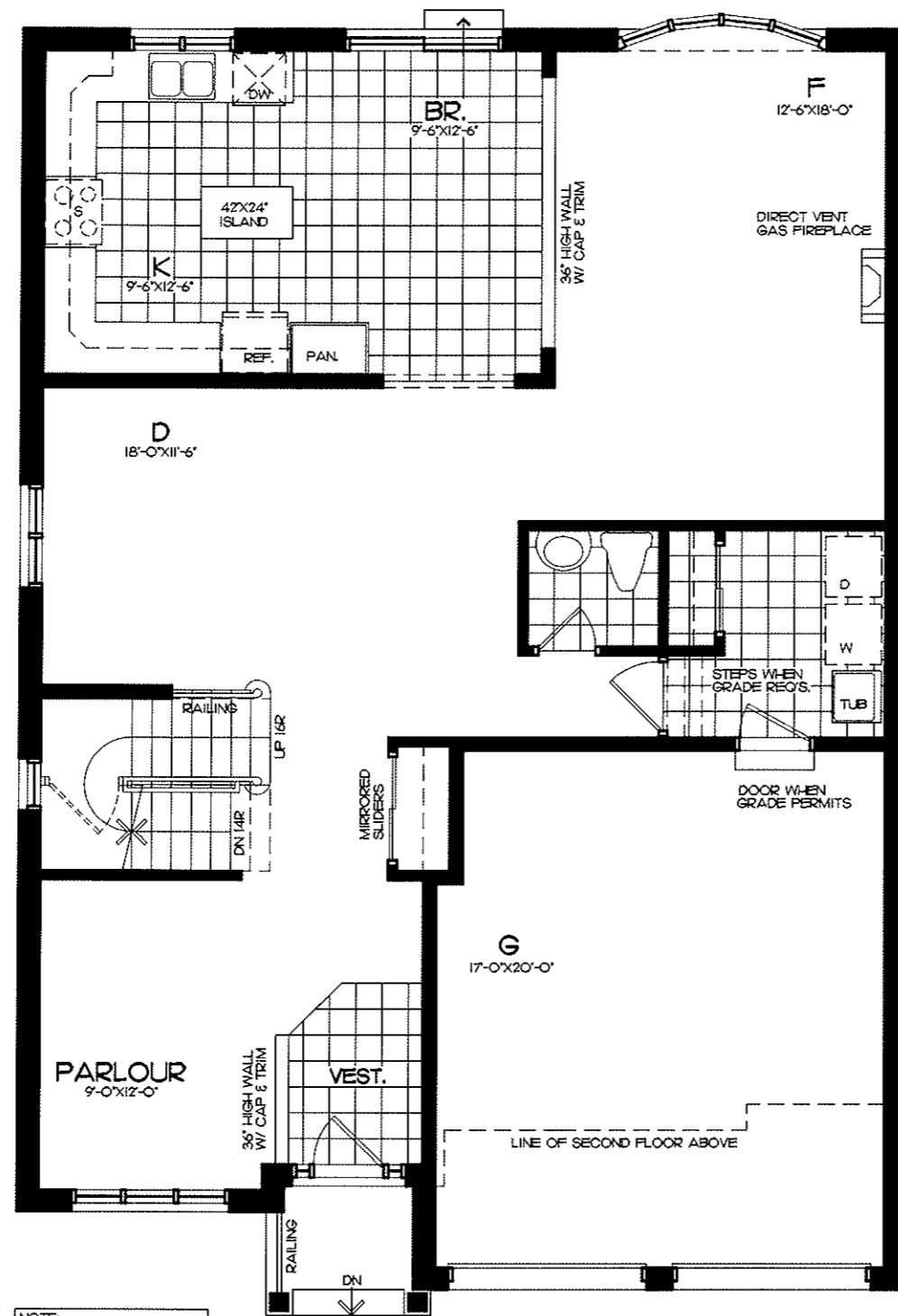
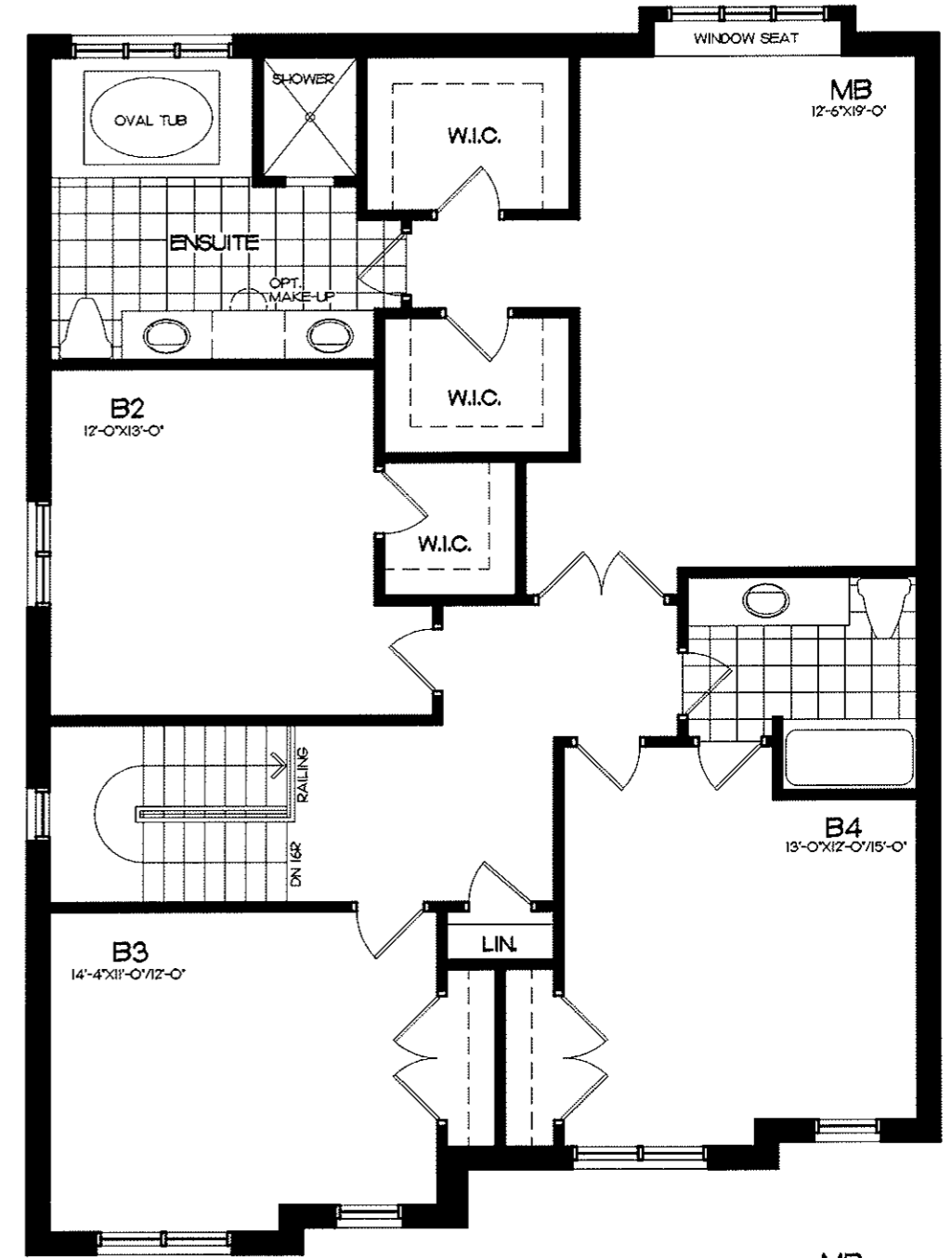


BASEMENT - ELEV. A

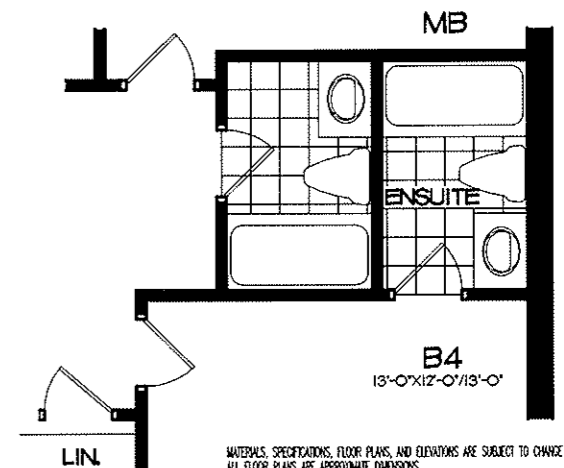


NOTE:  
9'-0" HIGH CEILING FOR  
GROUND FLOOR ROOMS

GROUND FLOOR - ELEV. A



SECOND FLOOR - ELEV. A

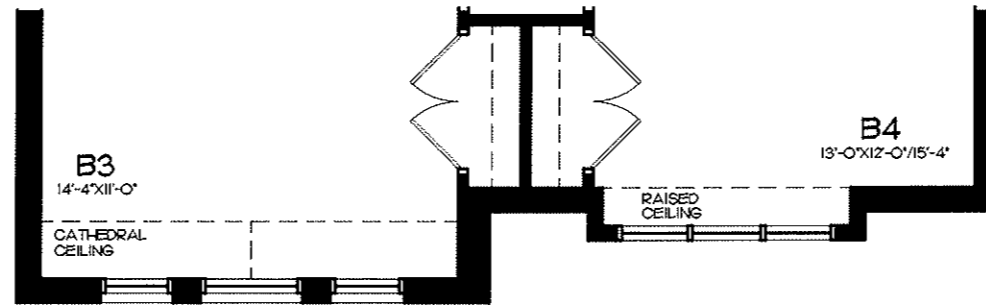


OPTIONAL BED. 4 ENSUITE

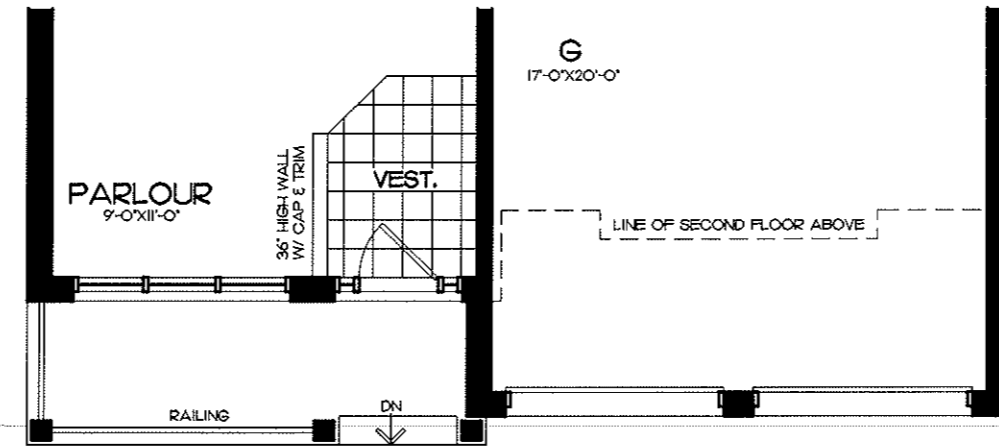
MATERIALS, SPECIFICATIONS, FLOOR PLANS, AND ELEVATIONS ARE SUBJECT TO CHANGE WITHOUT NOTICE.  
ALL FLOOR PLANS ARE APPROXIMATE DIMENSIONS.  
ACTUAL USABLE FLOOR SPACE MAY VARY FROM THE STATED FLOOR AREA, E.B.O.E.

MODEL TYPE - FAIRVIEW "MODIFIED"  
WN41-05 MOD.  
MODIFIED UNIT  
ELEVATION A G.F.A. = 2709 SF.

**LAURIER HOMES**  
WINDSONG NORTH - MARKHAM  
DESIGNS BY  
ANDERSON + ASSOCIATES INC.

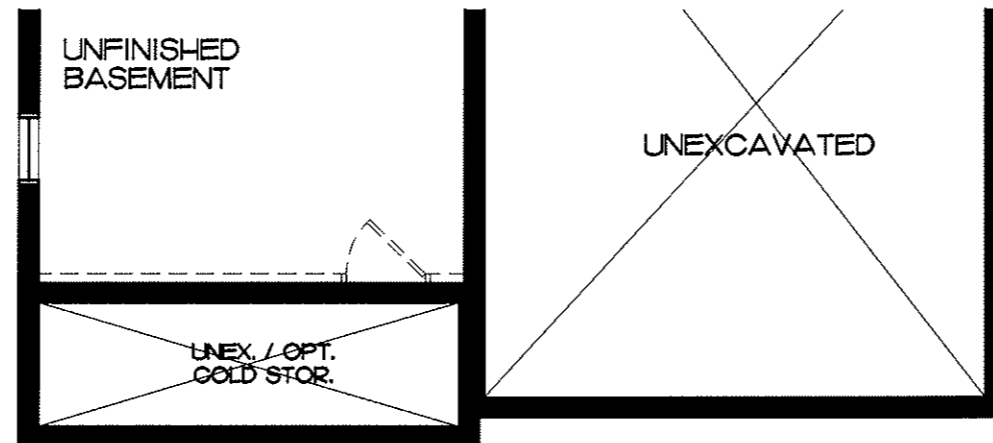


PART. SECOND FLOOR - ELEV. B



NOTE:  
9'-0" HIGH CEILING FOR  
GROUND FLOOR ROOMS

PART. GROUND FLOOR - ELEV. B



PART. BASEMENT - ELEV. B

MODEL TYPE - FAIRVIEW "MODIFIED"  
WN41-05 MOD.  
MODIFIED UNIT  
ELEVATION B G.F.A. = 2684 SF.

**LAURIER HOMES**  
WINDSONG NORTH - MARKHAM  
DESIGNS BY  
ANDERSON + ASSOCIATES INC.

MATERIALS, SPECIFICATIONS, FLOOR PLANS, AND ELEVATIONS ARE SUBJECT TO CHANGE WITHOUT NOTICE.  
ALL FLOOR PLANS ARE APPROXIMATE DIMENSIONS.  
ACTUAL USABLE FLOOR SPACE MAY VARY FROM THE STATED FLOOR AREA. E.A.O.E.