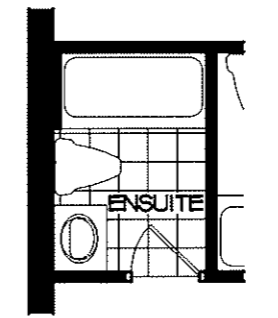
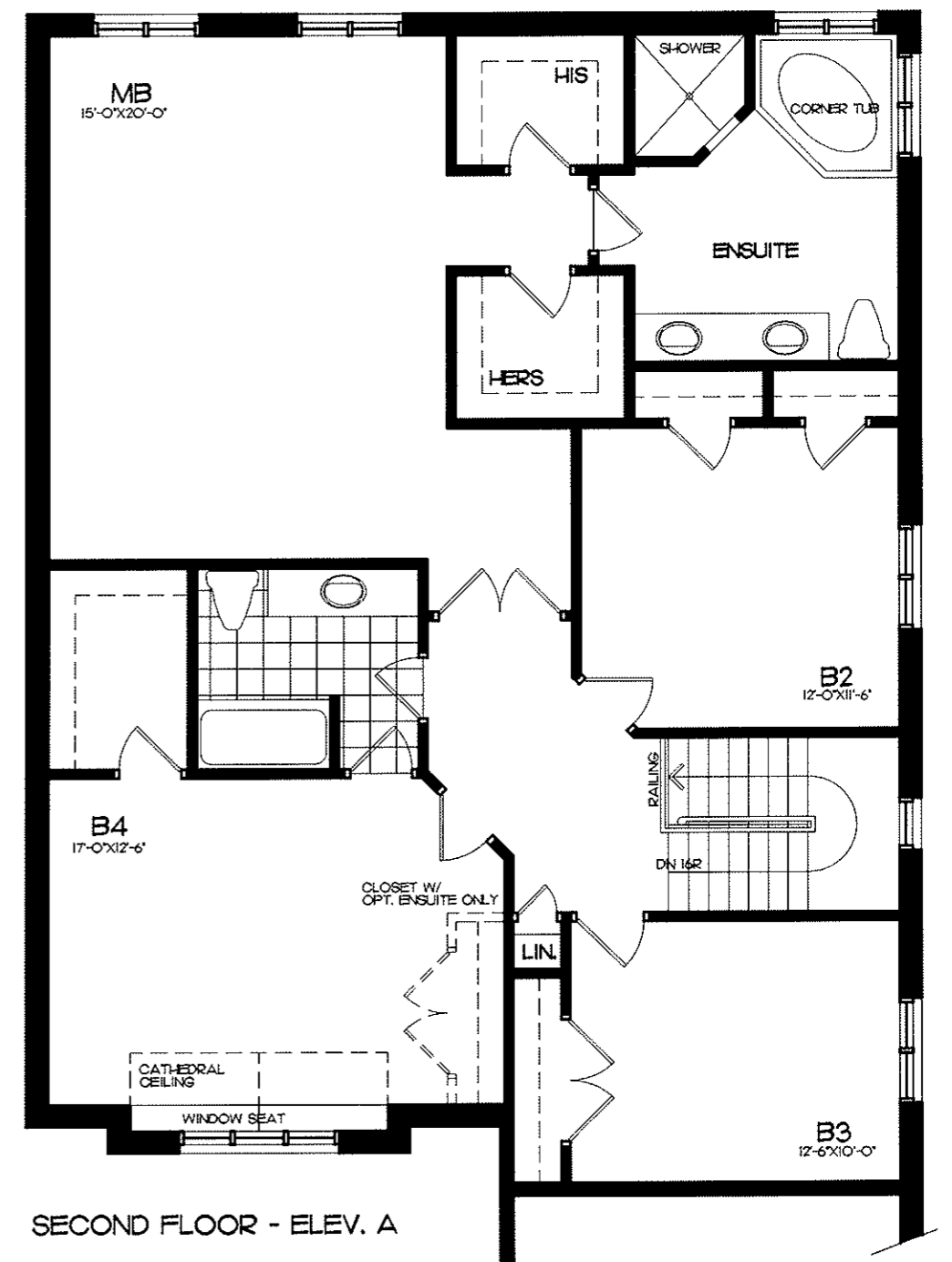


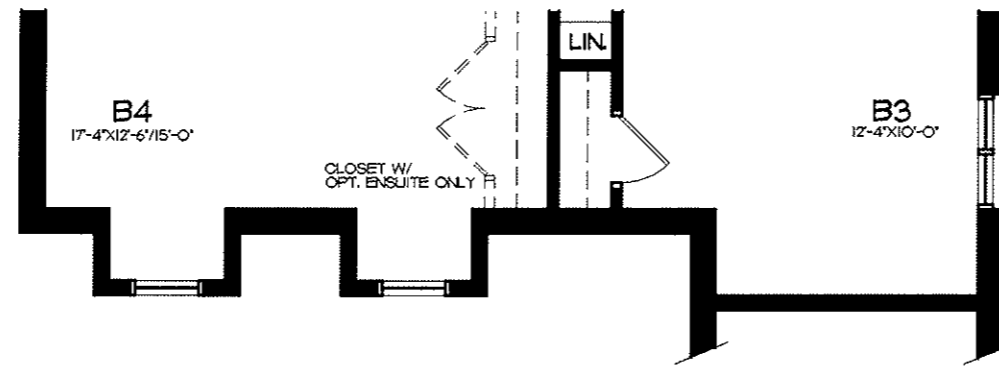
NOTE:
9'-0" HIGH CEILING FOR
GROUND FLOOR ROOMS

LAURIER HOMES
WINDSONG NORTH - MARKHAM
DESIGNS BY
ANDERSON + ASSOCIATES INC.

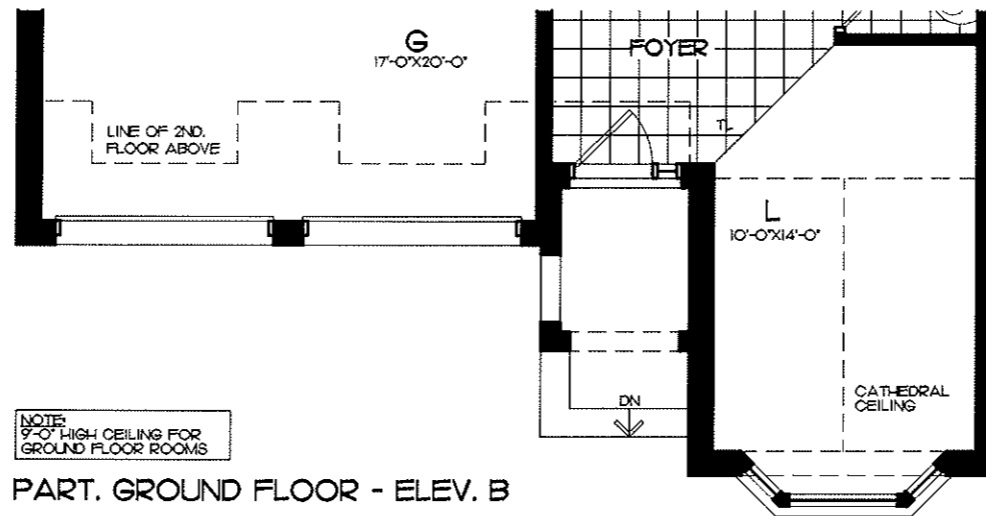


MODEL TYPE - SOUTHWEST "MODIFIED"
WN41-07 MOD.
MODIFIED UNIT
ELEVATION A G.F.A. = 2796 SF.

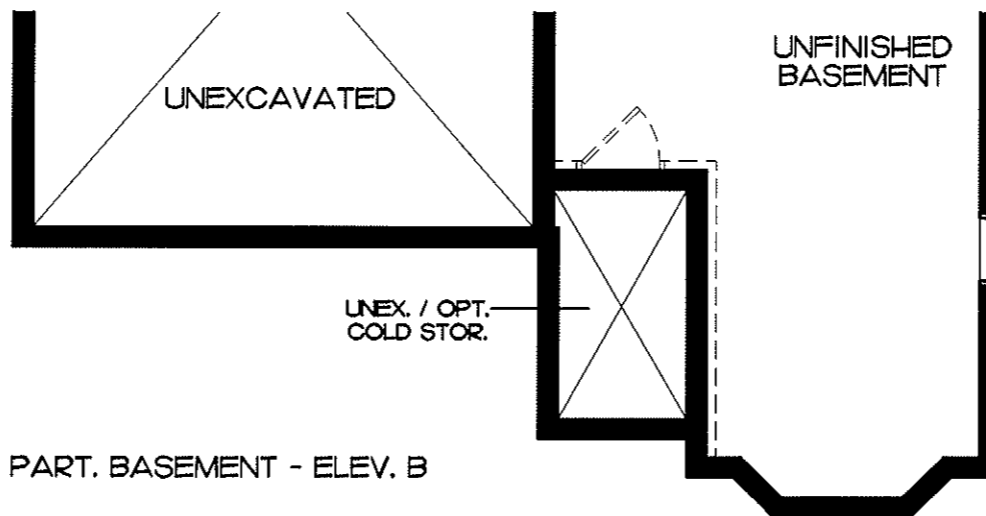
MATERIALS, SPECIFICATIONS, FLOOR PLANS, AND ELEVATIONS ARE SUBJECT TO CHANGE WITHOUT NOTICE.
ALL FLOOR PLANS ARE APPROXIMATE DIMENSIONS.
ACTUAL USABLE FLOOR SPACE MAY VARY FROM THE STATED FLOOR AREA. E.A.C.E.



PART. SECOND FLOOR - ELEV. B



PART. GROUND FLOOR - ELEV. B



PART. BASEMENT - ELEV. B

MODEL TYPE - SOUTHWEST "MODIFIED"
 WN41-07 MOD.
 MODIFIED UNIT
 ELEVATION B G.F.A. = 2799 SF.

LAURIER HOMES
 WINDSONG NORTH - MARKHAM
 DESIGNS BY
 ANDERSON + ASSOCIATES INC.

MATERIALS, SPECIFICATIONS, FLOOR PLANS, AND ELEVATIONS ARE SUBJECT TO CHANGE WITHOUT NOTICE.
 ALL FLOOR PLANS ARE APPROXIMATE DIMENSIONS.
 ACTUAL USABLE FLOOR SPACE MAY VARY FROM THE STATED FLOOR AREA. E.A.O.E.